



# Wittmann

# Battenfeld

October 2016, Kottlingbrunn/Austria  
2016年10月，奧地利 - 科廷布倫

## PRESS RELEASE 新聞發布

WITTMANN BATTENFELD at the K 2016  
威猛巴頓菲爾在K 2016

### WITTMANN BATTENFELD with new UNILOG B8 control system at the K 2016

#### 威猛巴頓菲爾於 K 2016 發表新產品 UNILOG B8 控制系統

*Under the motto "be smart", WITTMANN BATTENFELD is presenting its new UNILOG B8 machine control system at the K 2016 in Düsseldorf from 19 to 26 October in hall 16, booth D22. Without exception, the new UNILOG B8 will be installed on all machines.*

本公司標語揭曉「追求智慧產品與服務」，威猛巴頓菲爾於2016年10月19日至26日在德國Düsseldorf之K 2016展覽會(第16展廳/D22)發表新產品UNILOG B8控制系統。毫無例外，新的UNILOG B8控制系統將安裝於全部機器。

Both innovation and continuity are characteristic features of UNILOG B8, the new generation of control systems. Innovation in the area of visualization technology and software integration of all modules within a production cell, to be fit for the world of Industrie 4.0. Continuity in terms of symbols, logical processes and physical operation, to continue to grant users direct access to familiar functions in operating the machines. Based on the operating logic of the previous UNILOG B6 control system, WITTMANN BATTENFELD has created the new UNILOG B8, a control system which offers operators even more functions and convenience, while maintaining the ease of operation unchanged.

新一代控制系統UNILOG B8的特點是創新及連續性。任一生產單元內全部模組均應用視覺化技術領域創新與軟體整合，適用於全球工業4.0。就符號、邏輯程序與物理操作而言，連續性乃是繼續給予用戶直接連結，以了解熟悉於操控機械的功能。基於之前的UNILOG B6控制系統操作邏輯，威猛巴頓菲爾已生產出全新UNILOG B8控制系統，為操作員提供更多功能與便利的同時，亦保持了操作簡易。

As with the predecessor version, the new UNILOG B8 also runs under the Windows® operating system, now on Windows® 10 IoT. This enables easy integration of standard applications as well as Internet-based service support. Windows® 10 IoT offers extensive capacities for process control and data communication and thus supports latest, Industrie 4.0-compatible software. With the new generation of control systems, connection via OPC UA to higher-level systems such as MES systems has also become possible.

如同之前版本，新的UNILOG B8控制系統也使用Windows®作業系統，現在採用Windows® 10 IoT作業系統。這使得能夠容易整合標準應用程式及網際網路服務支援。Windows® 10 IoT提供廣泛能力的製程控制與資料通訊，因此，支援最新的工業Industrie 4.0相容軟體。採用新一代控制作業系統，也可能經由OPC UA連結至例如MES系統之更高層級系統。

With the new UNILOG B8, the operation of complex processes has been significantly simplified. To this end, the machine has been equipped with an intuitive multi touch screen operating panel enlarged to 21.5". Next to the pivotable monitor unit, a user-friendly manual operating panel has been installed in the central console of the machine.

使用新的UNILOG B8，已大幅簡化複雜的操作程序。因此，本機器配備直覺、多功能觸控面板擴大至21.5英寸。可旋轉式監視器旁邊，用戶容易手動操作面板，已安裝於機器的中央控制台。



**Wittmann**

**Battenfeld**

The new UNILOG B8 features an operating logic with a high degree of self-explanation, modeled on modern communication appliances. The process functions can be retrieved by gesture control (wiping/zooming) on the brightly lit, 21.5" full-HD touch screen display, which can be accessed via RFID, key card or key ring. The operating functions of the machine can be controlled by haptic buttons.

新的 UNILOG B8 具有高度自我解釋的操作邏輯，配置現代通訊設備模組。透過手勢控制(擦拭/縮放)，於明亮、高畫質、全螢幕觸控面板(21.5 英寸)上面可以存取/檢索資料，可以經由 RFID、密鑰卡或密鑰環連結存取。藉由觸覺按鍵，可以控制機器的操作功能。

The principle of direct access to the numerous functions has been retained by using app icons in fixed positions. Most function pages can be retrieved by one-touch movements.

使用位於固定位置的觸控圖標，已保留直接連結許多功能的原則。藉由一次觸控動作，可以存取大多數功能頁面。

The status of the machine and/or the integrated robots and peripherals is displayed via a colored status bar and pop-up menus as well as a set of "color traffic lights". Integrated assistance systems support the operator in machine setting and troubleshooting.

透過彩色狀態列、彈出選單與流量「彩色燈號」，顯示機器與機器人及周邊設備之整合狀態。整合輔助系統支援操作員有關機器設定與故障排除。

The *QuickSetup* program enables fast initial machine setting with a new mold. On the basis of access to the material data sets recorded in B8 and entry of a few data concerning the molded part and the machine, the control system calculates the initial process parameter data set for fast parameter setting. A comprehensive help library is also integrated in the control system.

藉由 *QuickSetup* 設定程式，用戶能夠迅速執行新模具的首次設定。依據連結至已儲存於 B8 的資料組並鍵入少量資料關於模鑄零件與機器，這套控制系統能夠計算首次製程參數組，以備迅速設定參數。這套控制系統也整合用戶求助綜合資料庫。

The smart screen display, which can be partitioned, enables simultaneous display and operation of two different functions. This is a special advantage, since thanks to WITTMANN 4.0 technology, machines and peripherals can be visualized and operated at the same time via a single monitor screen.

可以分割畫面、智慧型觸控面板能夠同時顯示並操作兩個不同功能。因為得益於 WITTMANN 4.0 技術，可以透過一個視覺化螢幕同時操作機器及周邊設備，這成為特別優勢。

With the new UNILOG B8, WITTMANN BATTENFELD is bringing a control system to market which offers extremely high standards of convenience and user-friendliness combined with an attractive modern design.

採用新型 UNILOG B8，威猛巴頓菲爾導入新型控制系統，提供極高標準，用戶使用非常方便，而且現代設計令人注目。



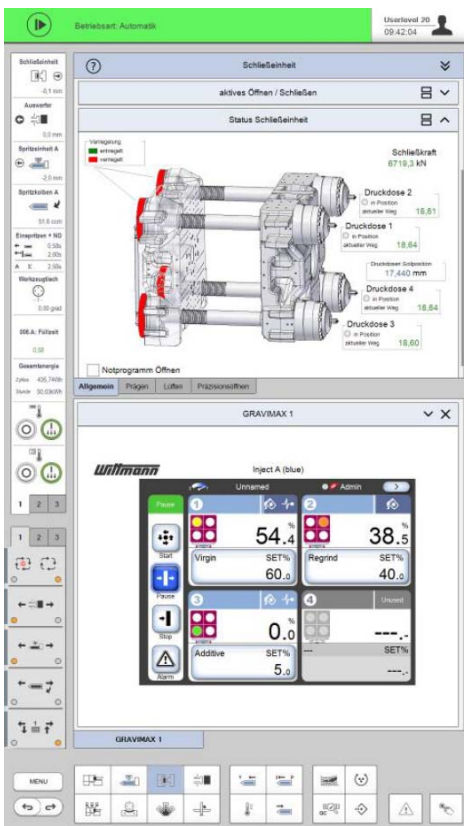
**Wittmann**

**Battenfeld**



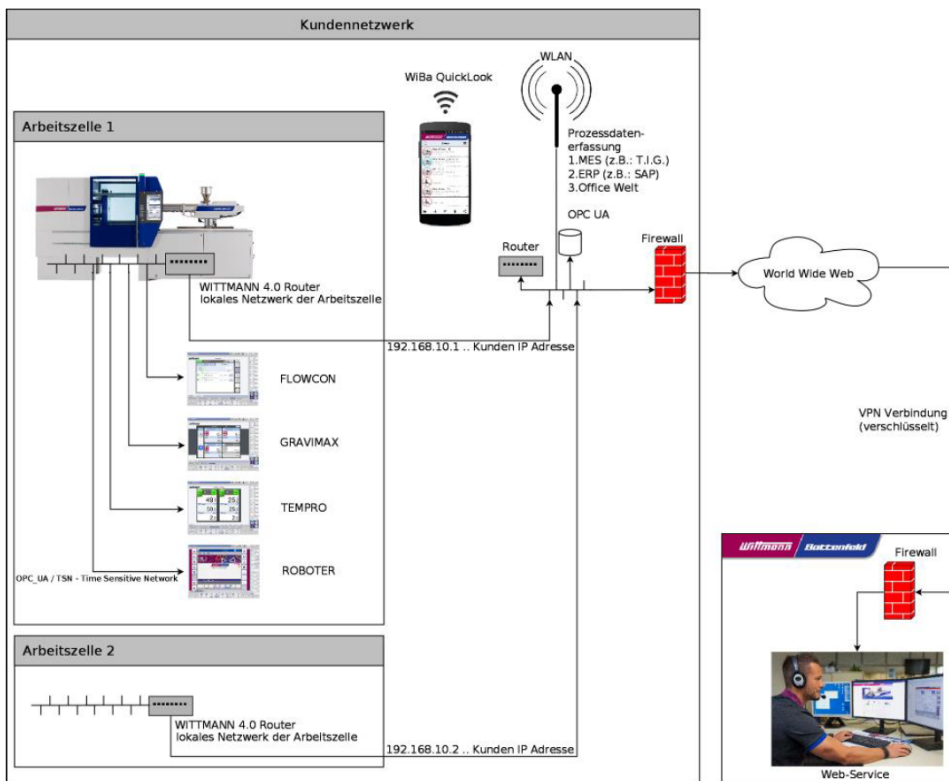
**Fig. 1:** The new UNILOG B8 control system – from the K 2016 onwards available for all *PowerSeries* machines

圖 1：自 K 2016 展覽會以後供應新型控制系統 UNILOG B8，適用於全部 *PowerSeries* 系列機器



**Fig. 2:** The partitionable smart screen enables two separate views simultaneously

圖 2：可以分割畫面，智慧型觸控面板能夠同時顯示並操作兩個不同功能



**Fig. 3:** Integration of robots and peripherals into the machine's UNILOG B8 control system via WITTMANN 4.0 and single-point entry to the network environment

**圖 3:** 藉由 WITTMANN 4.0，整合機器人與周邊設備於機器的 UNILOG B8 控制系統，單點進入網絡環境

## The WITTMANN Group

### 威猛集團

The WITTMANN Group is a worldwide leader in the manufacturing of injection molding machines, robots and peripheral equipment for the plastics industry. Headquartered in Vienna/Austria, the WITTMANN Group consists of two main divisions, WITTMANN BATTENFELD and WITTMANN, which operate 9 production facilities in 6 countries, including 32 direct subsidiary offices located in all major plastics markets around the world.

威猛集團是塑膠工業射出成型機、機器人及周邊設備的全球領導廠商。威猛集團總部設立於奧地利的維也納，有兩個主要部門：威猛巴頓菲爾與威猛，包含位於世界各主要塑膠市場的 9 座工廠(位於 6 個國家)與 32 個直屬辦事處。

WITTMANN BATTENFELD focuses on independent market growth in the manufacturing of state-of-the art injection molding machines and process technology, providing a modern and comprehensive range of machinery in a modular design that meets the actual and future requirements of the plastic injection molding market.

威猛巴頓菲爾專注於獨立市場，製造最先進的塑料射出成型機及研發製程技術，以模組化設計應用現代、廣泛的機器，滿足塑料射出成型市場實際與未來需求。



**Wittmann**

**Battenfeld**

WITTMANN's product range includes robots and automation systems, material handling systems, dryers, gravimetric and volumetric blenders, granulators, mold temperature controllers and chillers. With this comprehensive range of peripheral equipment, WITTMANN can provide plastics processors with solutions that cover all production requirements, ranging from autonomous work cells to integrated plant-wide systems. 威猛產品系列包括機器人自動化系統、材料搬運系統、乾燥機、重量及體積混合器、造粒機、模具溫度控制器和冷卻器。利用這些廣泛的周邊設備，威猛能夠為塑膠加工業者提供全面的生產需求解決方案，包括自主工作單元至整合工廠系統。

The syndication of the WITTMANN Group has led to connectivity between all product lines, providing the advantage plastics processors have been looking for in terms of a seamless integration of injection molding machines, automation and auxiliary equipment – all occurring at a progressive rate.

威猛集團的聯合已經導致全部產品線之間連結，為一直在尋求無縫整合自動化與輔助設備的塑膠加工業者創造優勢，目前正逐漸開展這些全部產品線策略。

**Contact:**

聯絡資訊：

WITTMANN BATTENFELD GmbH & Co.KG  
Werner-Battenfeld-Strasse 1  
D-58540 Meinerzhagen  
Tel.: +49 2354 72-0  
Fax: +49 2354 72-485  
info@wittmann-group.com  
www.wittmann-group.com

**WITTMANN BATTENFELD GmbH**  
Wiener Neustädter Strasse 81  
A-2542 Kottlingbrunn  
Tel.: +43 2252 404-1400  
Fax: +43 2252 404-991400  
gabriele.hopf@wittmann-group.com